

Management Corporation Strata Title Plan No. 4463  
Block 68 Sengkang Square Rd #B1-42 Singapore 544704  
T: 6385 3912  
E: [lafiestamgt@gmail.com](mailto:lafiestamgt@gmail.com)



# **APPROVED**

# **BALCONY SCREEN DESIGN**

Management Office 68 Sengkang Square Rd #B1-42 Singapore 544704 Tel: (65) 6385 3912  
Email: [lafiestamgt@gmail.com](mailto:lafiestamgt@gmail.com)

Managing Agent Wisely 98 Pte Ltd  
2 Kallang Ave, #07-32 CT Hub, Singapore 339407 Tel: (65) 6291 5355 Fax: (65) 6291 5655  
Website: [www.wisely98.com](http://www.wisely98.com)

Managing Agent

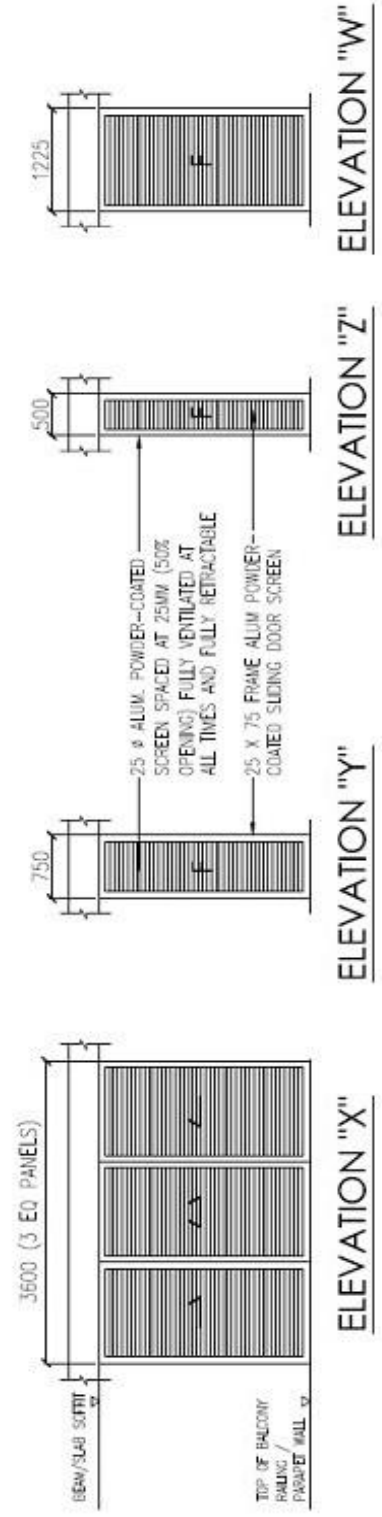
**BALCONY 1 & 1a**



UNITS WITH BALCONY 1 & 1a

**BLOCK 50**  
 UNIT # 02 - 01 to #15 - 01  
 UNIT # 02 - 04 to #15 - 04

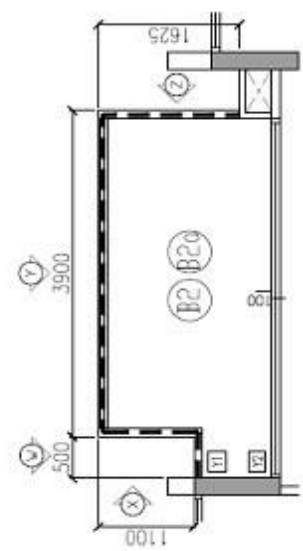
**BLOCK 52**  
 UNIT # 02 - 05 to #15 - 05  
 UNIT # 02 - 08 to #15 - 08



**Colour Code: RAL 7012 Basalt Grey (powder coat)**

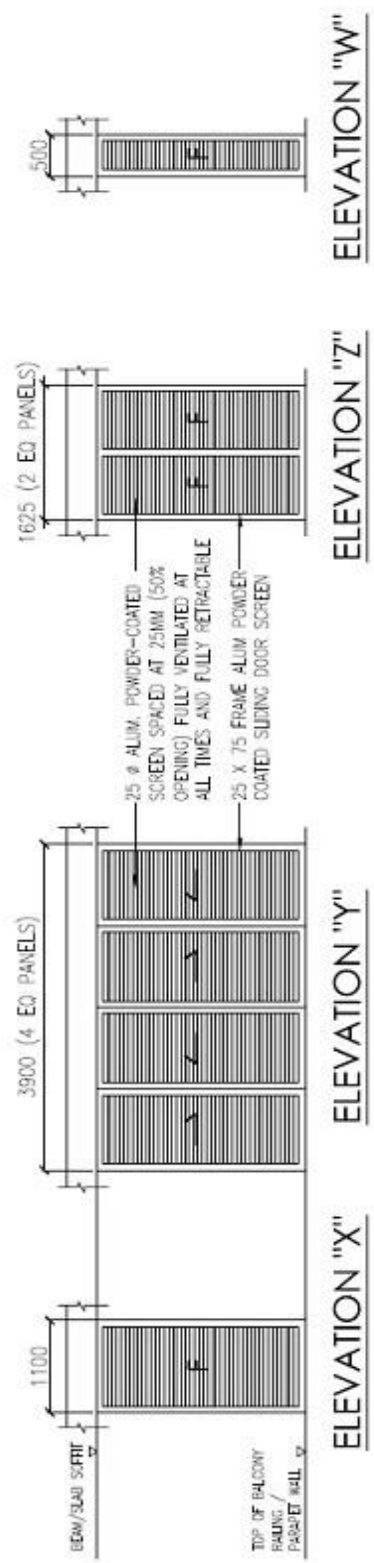
**BALCONY 2 & 2a**

UNITS WITH BALCONY 2 & 2a  
 BLOCK 52  
 UNIT # 02-06 to #15-06  
 UNIT # 02-07 to #15-07



**FLOOR PLAN**

--- DEVOTES LOCATION OF BALCONY SCREEN



**Colour Code: RAL 7012 Basalt Grey (powder coat)**

**BALCONY 3 & 3a**



UNITS WITH BALCONY 3 & 3a

**BLOCK 50**

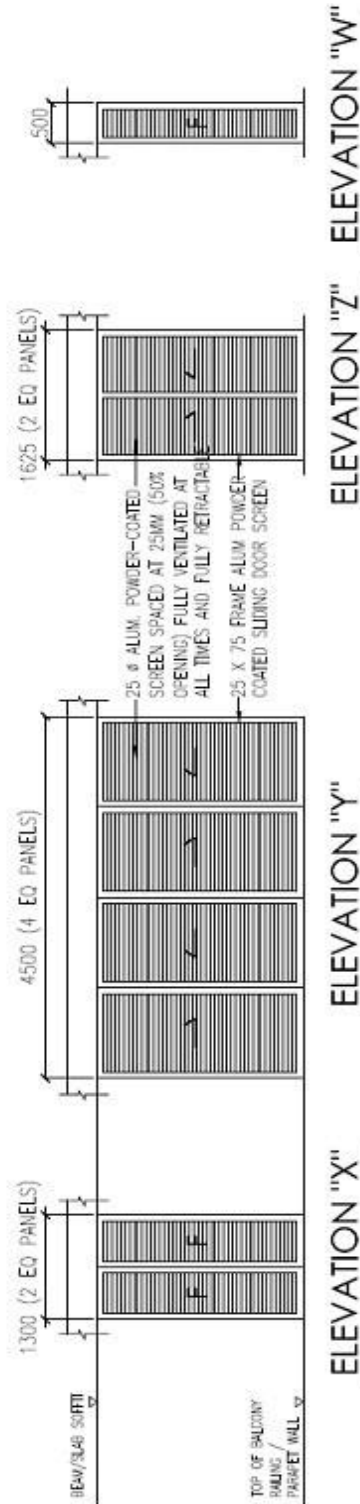
UNIT # 02 - 02 to #15 - 02

UNIT # 02 - 03 to #15 - 03

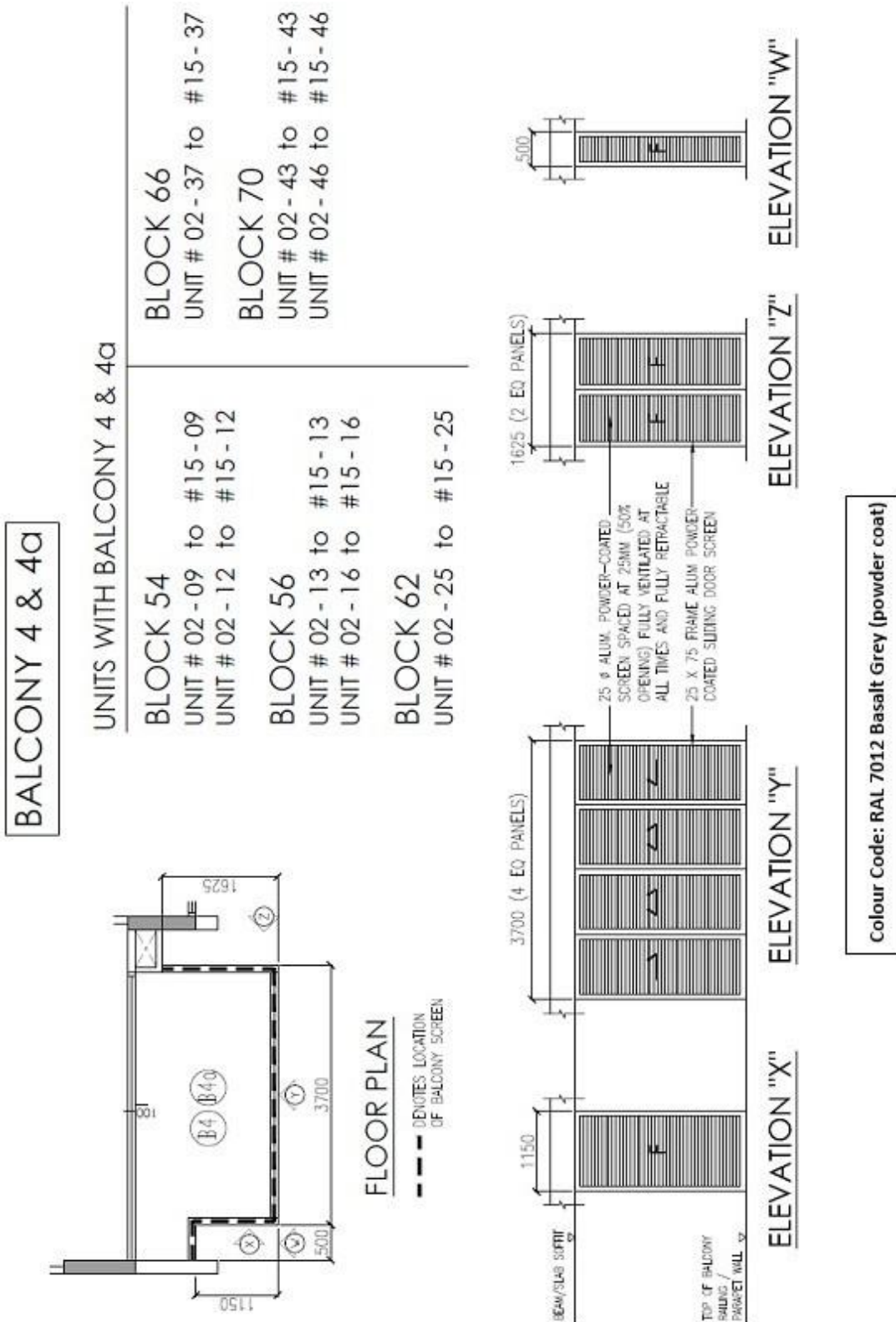
**BLOCK 54**

UNIT # 02 - 10 to #15 - 10

UNIT # 02 - 11 to #15 - 11



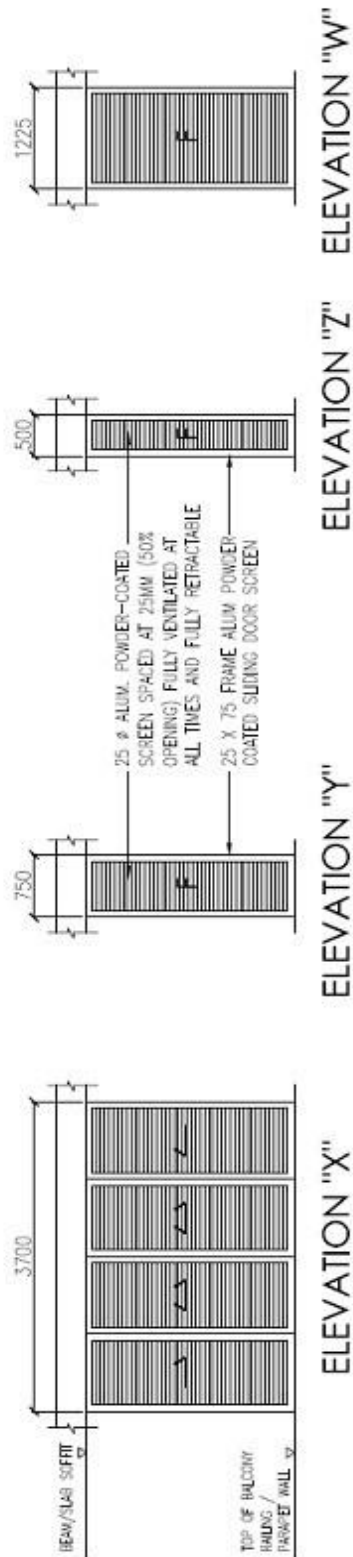
**Colour Code: RAL 7012 Basalt Grey (powder coat)**



**BALCONY 5 & 5a**

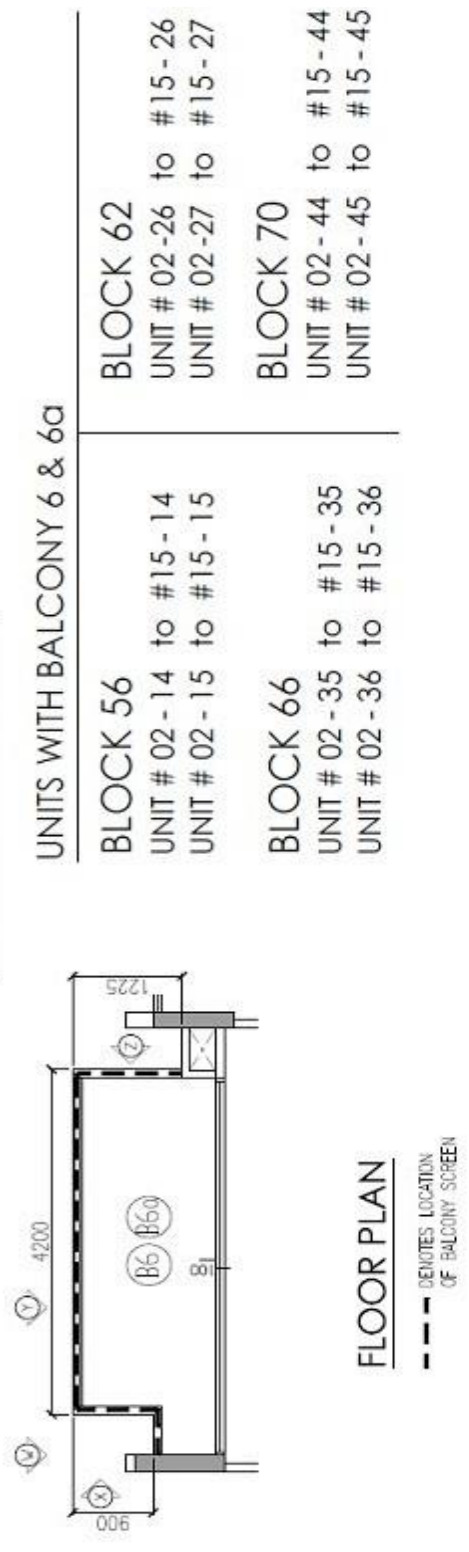
UNITS WITH BALCONY 5 & 5a

|   |   |   |   |
|---|---|---|---|
| <b>BLOCK 58</b><br>UNIT # 02 - 18 to #15 - 18<br>UNIT # 02 - 19 to #15 - 19 | <b>BLOCK 60</b><br>UNIT # 02 - 22 to #15 - 22<br>UNIT # 02 - 23 to #15 - 23 | <b>BLOCK 72</b><br>UNIT # 02 - 48 to #15 - 48<br>UNIT # 02 - 49 to #15 - 49 | <b>BLOCK 74</b><br>UNIT # 02 - 52 to #15 - 52<br>UNIT # 02 - 53 to #15 - 53 |
|---|---|---|---|



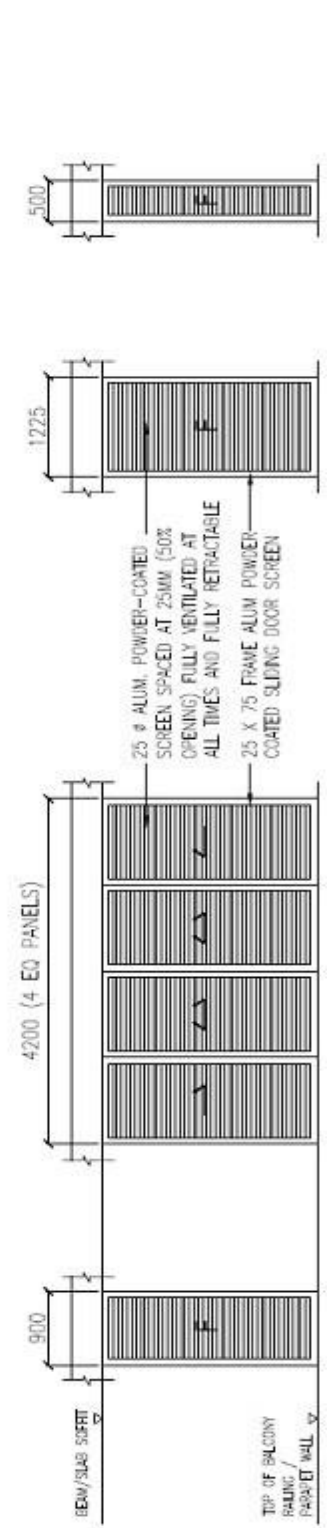
**Colour Code: RAL 7012 Basalt Grey (powder coat)**

**BALCONY 6 & 6a**

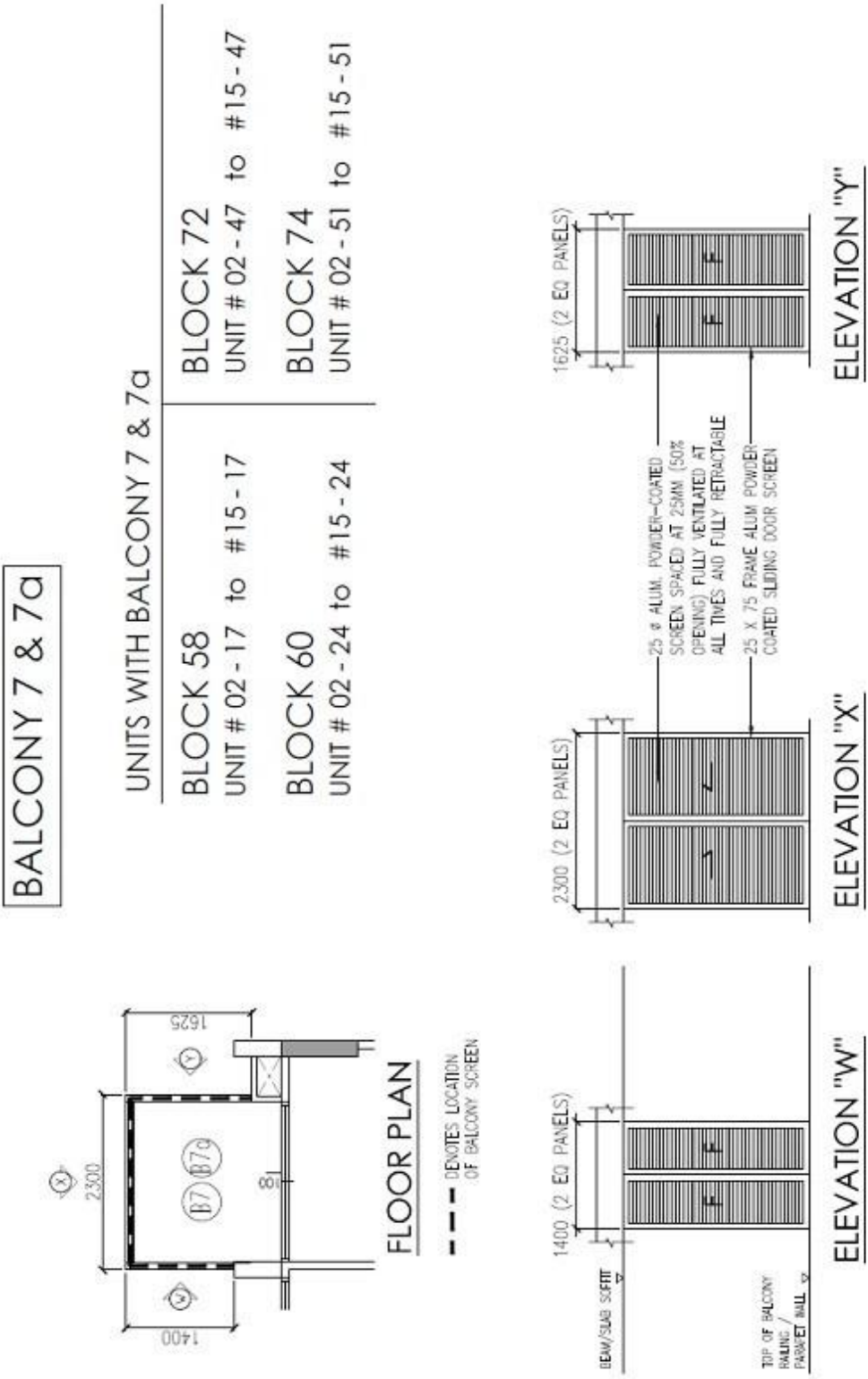


UNITS WITH BALCONY 6 & 6a

- |                        |                        |
|------------------------|------------------------|
| <b>BLOCK 56</b>        | <b>BLOCK 62</b>        |
| UNIT # 02-14 to #15-14 | UNIT # 02-26 to #15-26 |
| UNIT # 02-15 to #15-15 | UNIT # 02-27 to #15-27 |
| <b>BLOCK 66</b>        | <b>BLOCK 70</b>        |
| UNIT # 02-35 to #15-35 | UNIT # 02-44 to #15-44 |
| UNIT # 02-36 to #15-36 | UNIT # 02-45 to #15-45 |

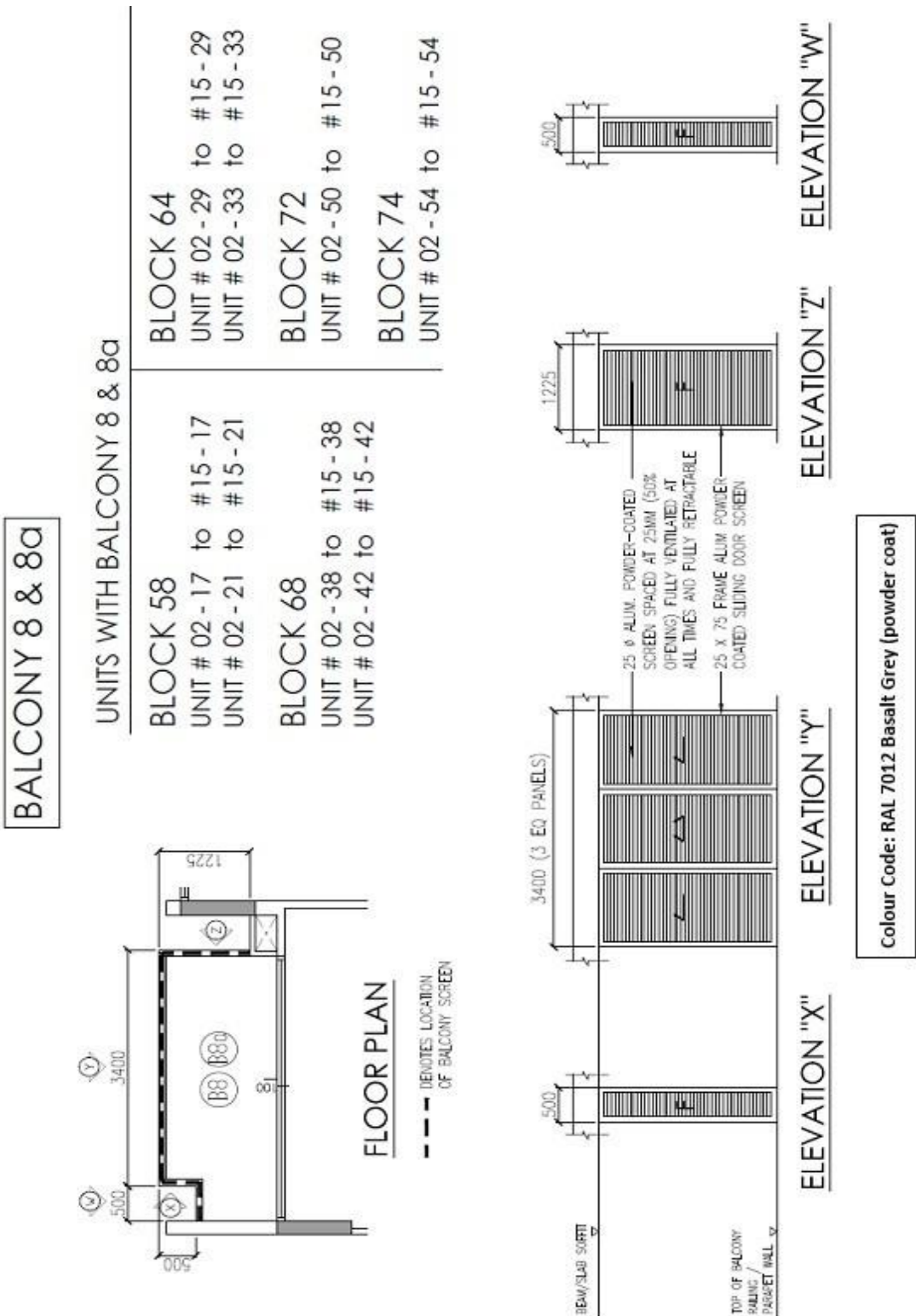


**Colour Code: RAL 7012 Basalt Grey (powder coat)**

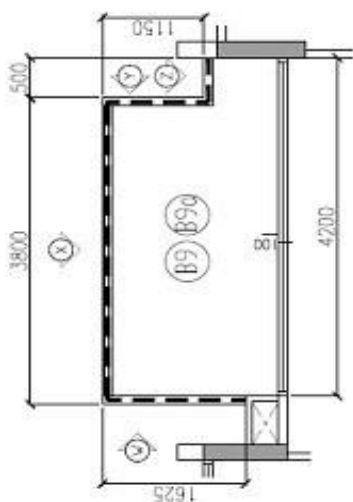


Colour Code: RAL 7012 Basalt Grey (powder coat)





**BALCONY 9 & 9a**



**FLOOR PLAN**

--- DENOTES LOCATION OF BALCONY SCREEN

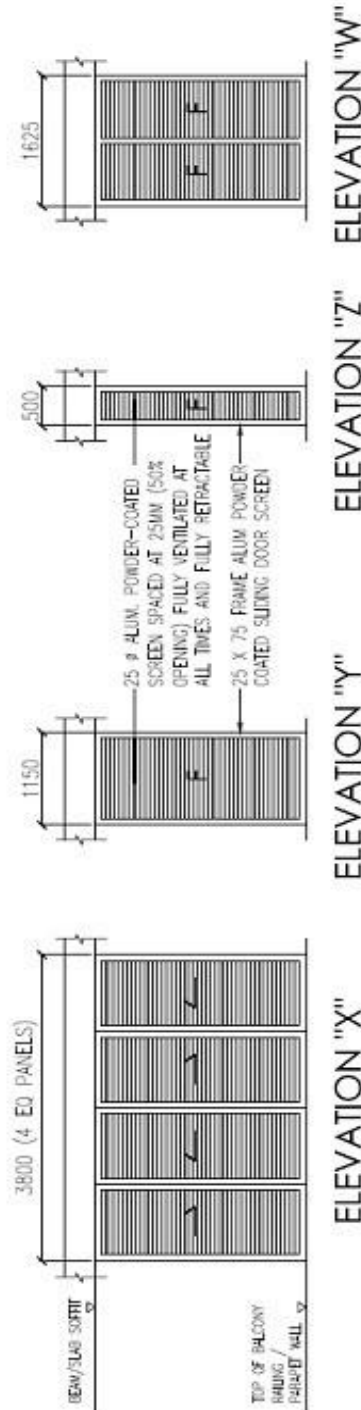
UNITS WITH BALCONY 9 & 9a

BLOCK 62

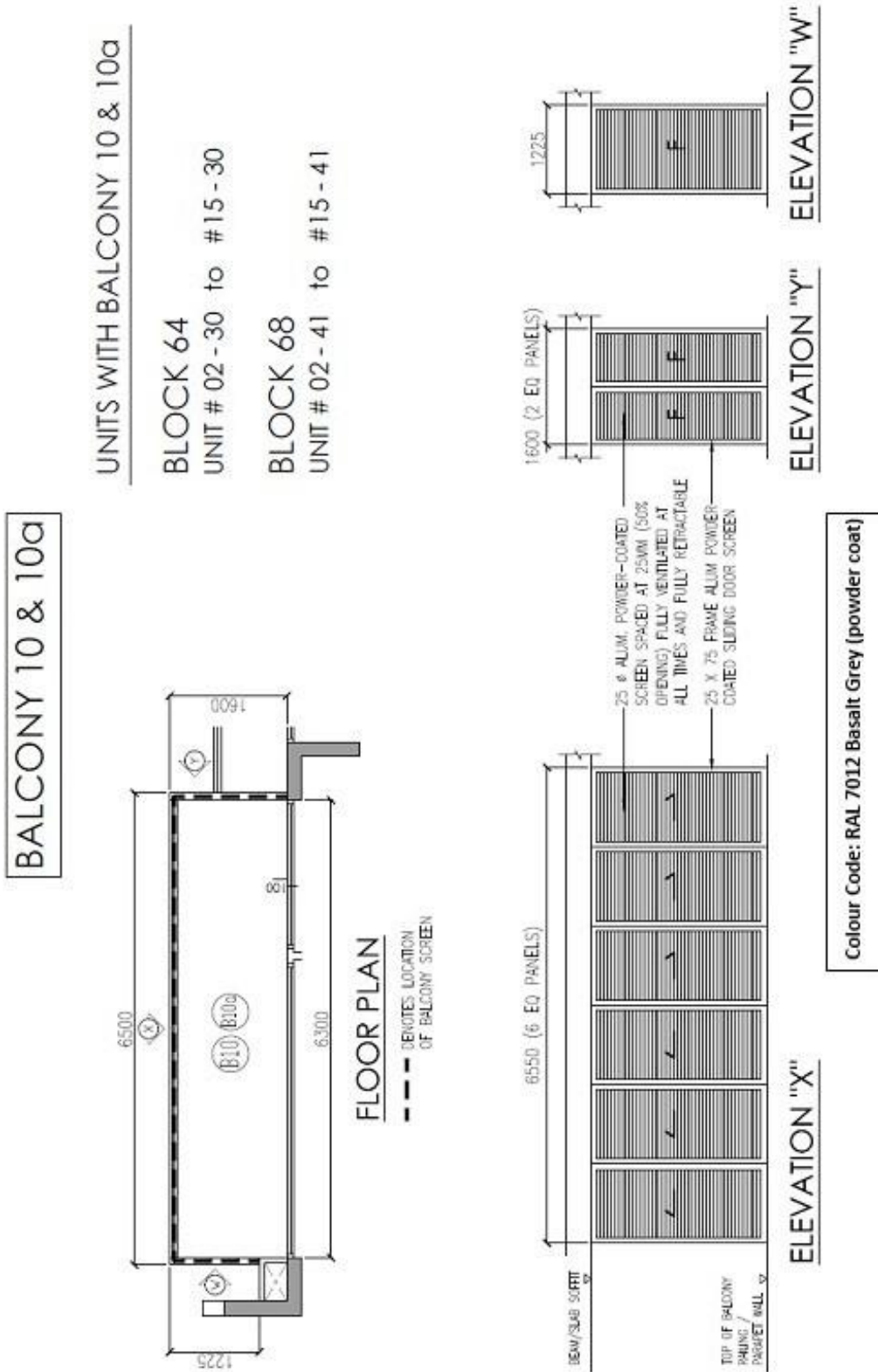
UNIT # 02 - 28 to #15 - 28

BLOCK 66

UNIT # 02 - 34 to #15 - 34



Colour Code: RAL 7012 Basalt Grey (powder coat)



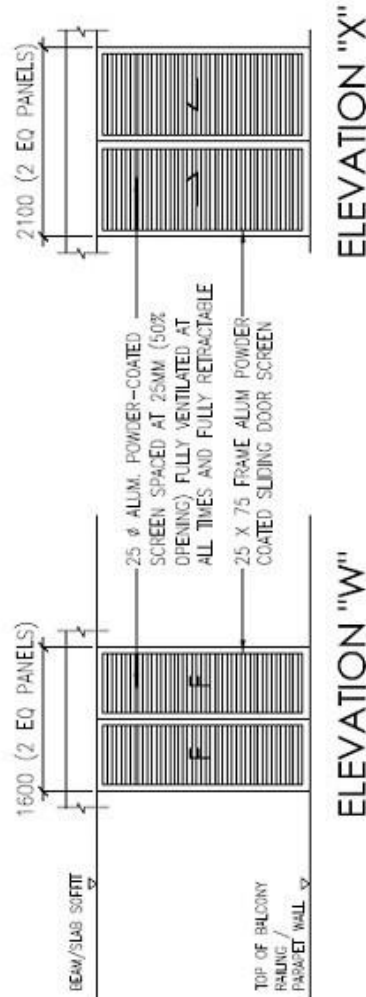
**BALCONY 11 & 11a**



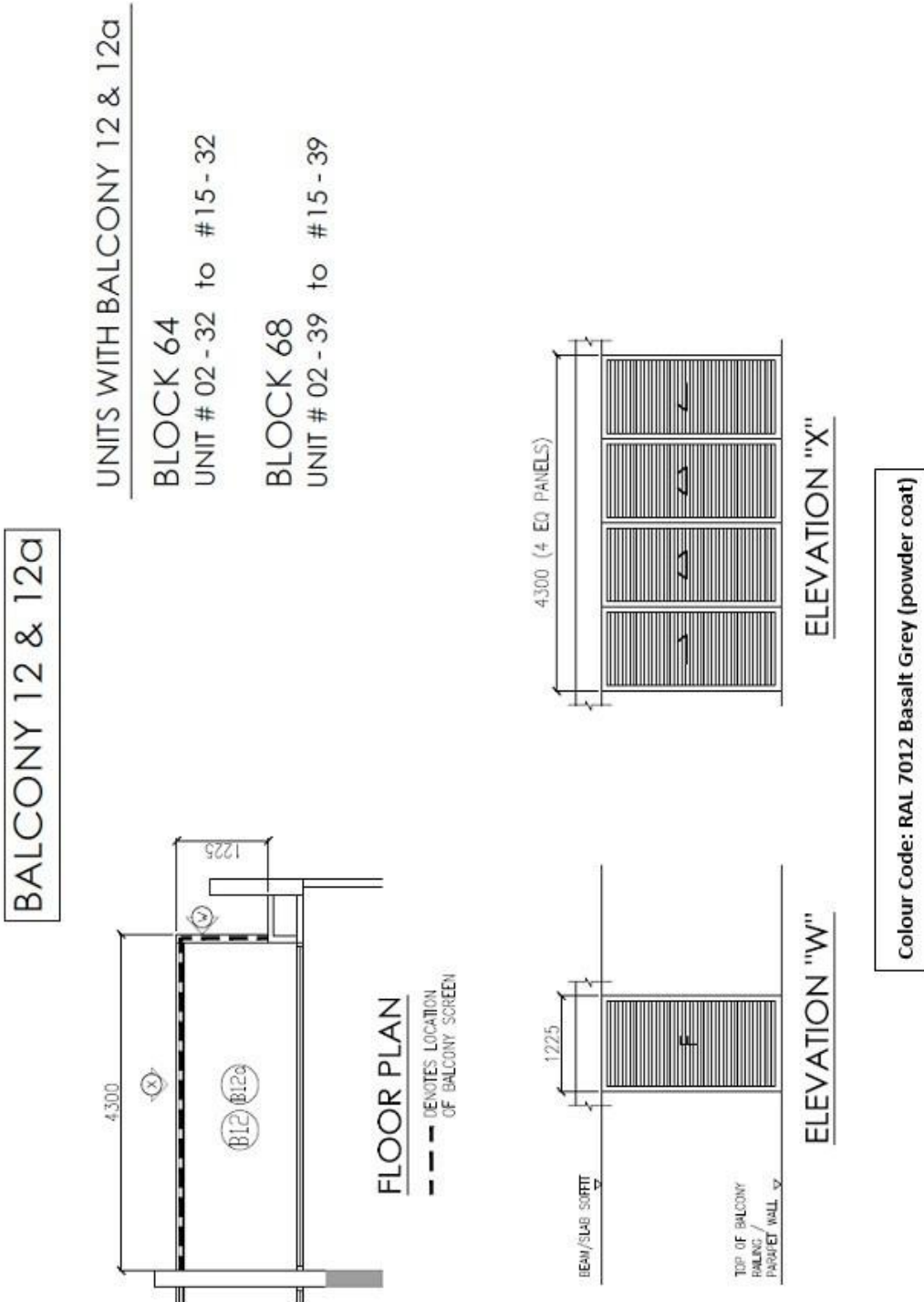
UNITS WITH BALCONY 11 & 11a

**BLOCK 64**  
 UNIT # 02 - 31 to #15 - 31

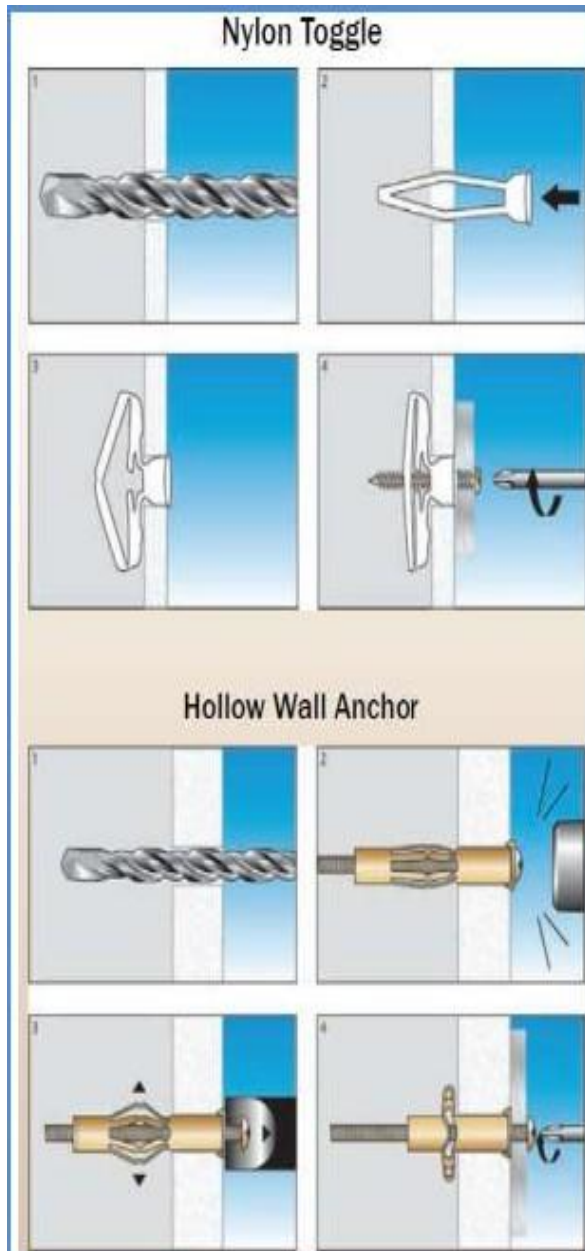
**BLOCK 68**  
 UNIT # 02 - 40 to #15 - 40



**Colour Code: RAL 7012 Basalt Grey (powder coat)**



### About Internal Units' walls and floor



### Lightweight Fixtures on GypWall Partitions:



Determine and mark the area where the fixture is to be hung.



Drill a hole into the GypWall with a smaller size drill bit compared to the diameter of the toggle device.



Hammer the toggle device into the hole.



Fix a screw into the toggle device. The toggle will expand as the screw goes in.



Hang your fixtures.

### Medium weight Fixtures on GypWall Partitions:

In some instances, you may wish to hang fixtures that are rather big or heavy such as kitchen cabinets, book shelves, and wall unit air-conditioners. In such cases, additional support is required to bear the additional load. Additional support will differ according to the weight of



Determine the area where your material is to be hung and remove the Gyproc gypsum board.



Fasten additional and appropriately-sized supporting metal frames into the GypWall cavity. This is good enough for up to 19 kg per point load.



For enhanced strength, timber noggins/batten may be used. Fasten the timber noggins into the cavity of the metal frame.



Place the cut Gyproc gypsum board back and fasten it to the supporting metal frames..



Fix a screw through the board into the metal frame (or timber noggin) and hang your fixtures.

#### Light/Medium Duty Anchors: <12kg/point load



WALL PHOTOS, CLOCKS, MIRRORS, PAINTINGS, ETC



**TIP!**  
 It is important to choose the correct fastener to the wall type. Also be sure to check if the item you are using is to include any load-bearing capacity.

#### Heavy Duty Anchors: <25kg/point load




TOP-HUNG CABINETS, FLAT SCREEN TV, SHELVING

**MANAGEMENT CORPORATION STRATA TITLE PLAN NO. 4463**

GST No: M90371352Y

**PAINT COLOUR SCHEME**

| <b>BASEMENT 1 AND BASAMENT 2 LOBBY EXTERIOR WALL</b> |               |                    |
|--|---------------|--------------------|
| <b>Location</b>                                      | <b>Colour</b> | <b>Colour Code</b> |
| Blks 50-52-54  | Fog Grey      | WS10988            |
| Blks 56-58-60  | Choco Malt    | WS17123            |
| Blks 62-64   | Terra Cotta   | WS12199            |
| Blks 66-68   | Kenyan Leaves | WS13599            |
| Blks 70-72-74  | Carmel        | WA16533            |
| <b>EXTERNAL WALL/ CORRIDOR WALL</b>                  |               |                    |
| <b>Colour</b>  |               | <b>Colour Code</b> |
| Purple Lint  |               | A928-21237         |
| Grey Heat  |               | A928-20701         |
| <b>RAILING</b>                                       |               |                    |
| <b>Location</b>                                      | <b>Colour</b> | <b>Colour Code</b> |
| Balcony/ AC Ledge/<br>Staircase                      | Dark Grey     | RAL 7012           |
| <b>INTERNAL &amp; COMMON AREAS</b>                   |               |                    |
| <b>Colour</b>  |               | <b>Colour Code</b> |
| White  |               | 00E55              |

Management Office 68 Sengkang Square Rd #B1-42 Singapore 544704 Tel: (65) 6385 3912  
Email: [lafiestamgt@gmail.com](mailto:lafiestamgt@gmail.com)

Managing Agent Wisely 98 Pte Ltd  
2 Kallang Ave, #07-32 CT Hub, Singapore 339407 Tel: (65) 6291 5355 Fax: (65) 6291 5655  
Website: [www.wisely98.com](http://www.wisely98.com)